

Luxury &
LIME
SEDUCTIVE TEXTURES



Microsynth Marble Floor&Wall **COLOR PALETTE**

Idc
Innovative
decorations
coating

Microsynth Marble Floor&Wall

WET AREAS

Grazie all'eccellente impermeabilità Microsynth Marble Floor&Wall è il rivestimento ideale per le superfici a contatto con l'acqua e l'umidità: bagni, bagni turchi e aree wellness.

Thanks to excellent waterproofing, Microsynth Marble Floor&Wall is the ideal coating for surfaces in contact with water and humidity: baths, steam rooms and wellness areas.

BATHROOMS

L'alta lavorabilità del prodotto permette la sua stesura su ogni tipo di superficie, orizzontale e verticale, senza colature. Le texture generate dalle spatolate eseguite con Microsynth Marble 100 ricordano le venature del marmo.

The high workability of the product allows it to be spread on any type of surface, horizontal and vertical, without dripping. The textures generated by the spatula strokes performed with Microsynth Marble 100 are reminiscent of marble veinings.

FLOORS

Rifinando la parete o il pavimento con Microsynth Marble 300 si ottiene una superficie dall'aspetto più omogeneo e denso.

Il rivestimento protettivo, Pure Varnish Bico Top Coat, è una vernice poliuretanica bicomponente che conferisce alle superfici un'elevata resistenza, facilita la pulizia e riduce la proliferazione delle cariche batteriche.

By finishing the wall or floor with Microsynth Marble 300, a more homogeneous and dense-looking surface is obtained.

The protective coating, Pure Varnish Bico Top Coat, is a two-component polyurethane varnish that guarantees high resistance to surfaces, facilitates cleaning and reduces the proliferation of bacteria.

STORES

Grazie all'elevata resistenza conferita dalla catalisi con CTW 19, Microsynth Marble Floor&Wall è particolarmente adatto per la realizzazioni di superfici calpestabili commerciali.

Consigliamo di catalizzare il prodotto al 4% con CTW 19 anche per garantire una migliore asciugatura del fondo.

Thanks to the high resistance conferred by catalyzing with CTW 19, Microsynth Marble Floor&Wall it's particularly suitable for the creation of commercial capable surfaces.

We recommend catalyzing the product at 4% with CTW 19 also to ensure a better drying of the substrate.

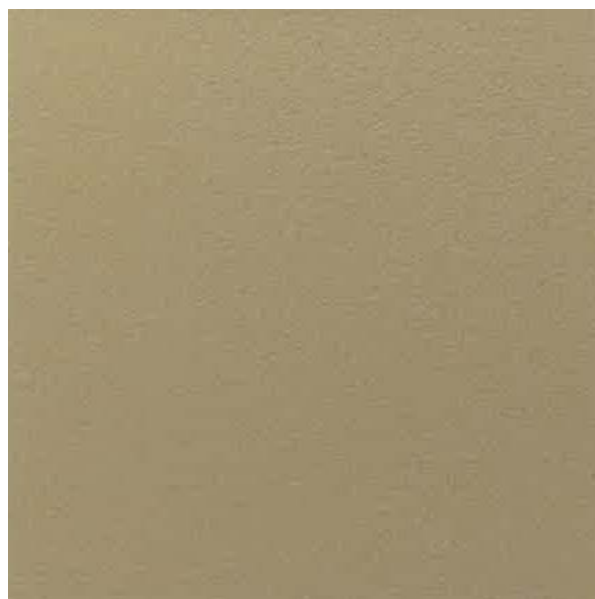
All colors are available in satin or matt finishes

Microsynth Marble Floor&Wall

All colors are available
in satin or matt finishes



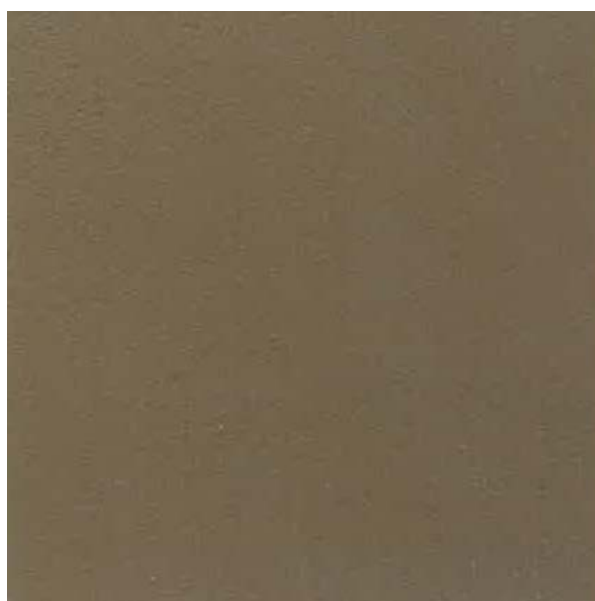
COLOR 001 • Light Cream



COLOR 002 • Sahara



COLOR 003 • Tamarindo



COLOR 004 • Giza



COLOR 005 • Caramel

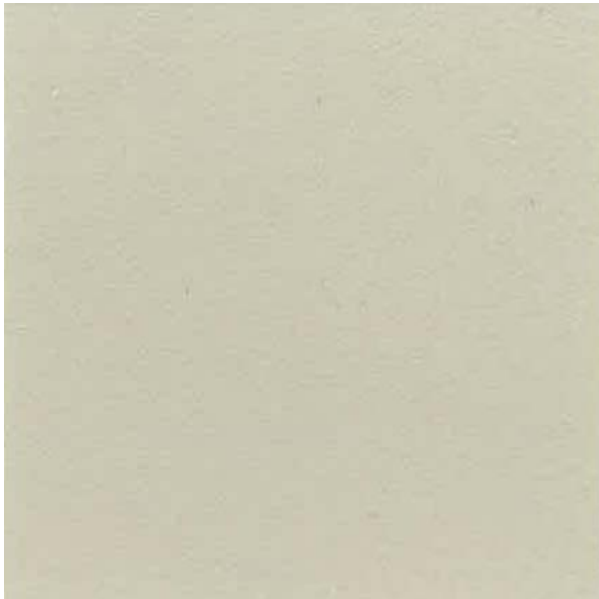


COLOR 006 • Cookies

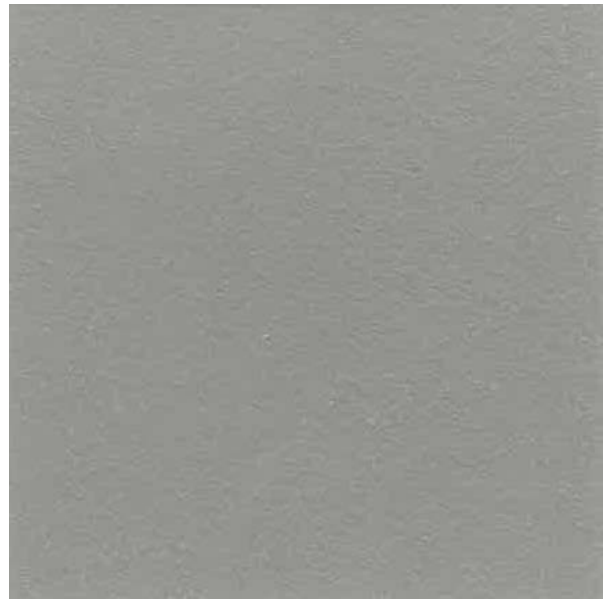
NOTE: BeriCalce's Toner Sabbia 500 and Toner Coccio Fine can be added to all colors.

Microsynth Marble Floor&Wall

All colors are available
in satin or matt finishes



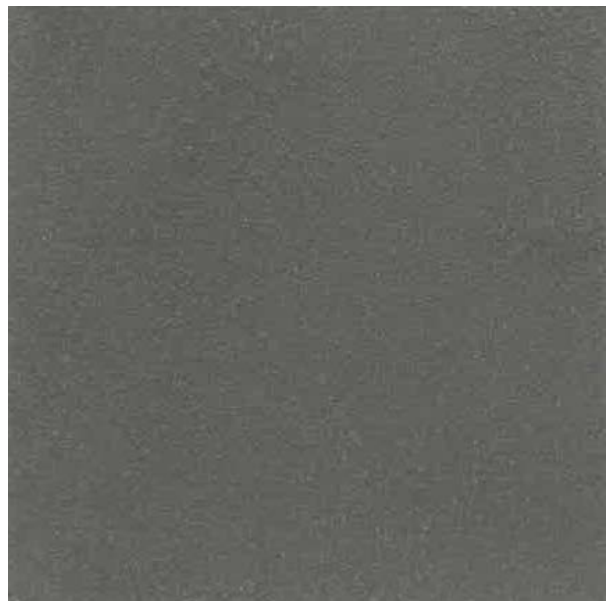
COLOR 007 • Coconut Milk



COLOR 008 • London Fog (**Satin sample**)



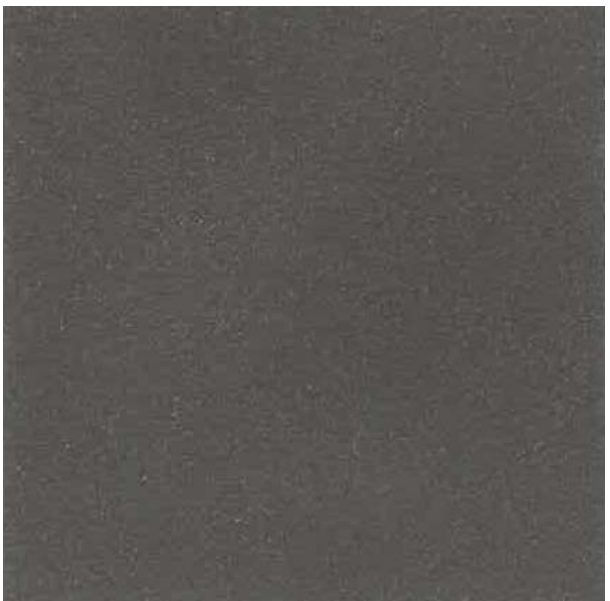
COLOR 009 • Shadow



COLOR 010 • Chia (**Satin sample**)



COLOR 011 • Stone Age



COLOR 012 • Basalt (**Satin sample**)

NOTE: BeriCalce's Toner Sabbia 500 and Toner Coccio Fine can be added to all colors.

Microsynth Marble Floor&Wall

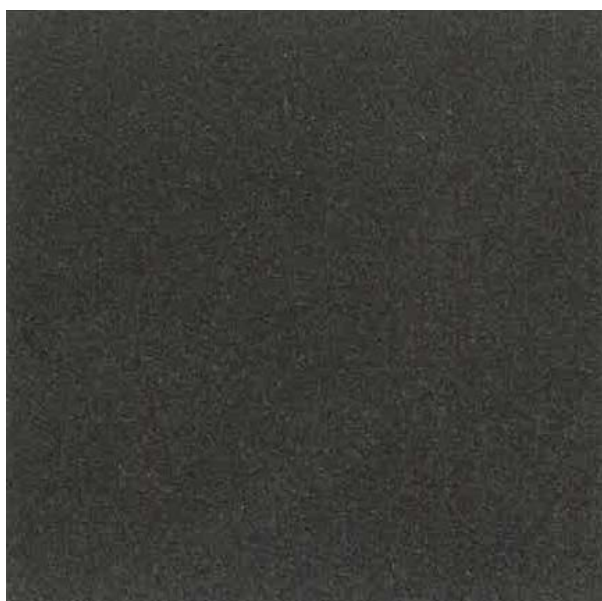
All colors are available
in satin or matt finishes



COLOR 013 • Ocean



COLOR 014 • Mars



COLOR 015 • Antracite



COLOR 016 • Cocoa



COLOR 017 • Salt + Toner Sabbia 500



COLOR 018 • Rose + Toner Coccio Fine

NOTE: BeriCalce's Toner Sabbia 500 and Toner Coccio Fine can be added to all colors.

Microsynth Marble

Floor&Wall

COLOR PALETTE



Bericalce ITALIA

Via Odorico da Pordenone, 18
36100 Vicenza - Italia
Tel./Fax (+39) 0444 929102
Tel. (+39) 0444 654919
info@bericalce.com
bericalce.com

Bericalce U.S.A. LLC

Miami
Florida - U.S.A.
Phone (001) 561 459 5503

Bericalce CANADA INC.

Montréal
Quebec - Canada
Phone: (001) 561 459 5503